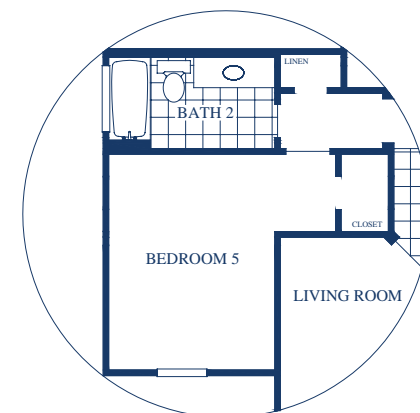


ARCHITECTURAL STYLE 'C'



OPT. BATH 2

Bryson | 3,138-3,780sf



Prices, plans, and specifications are subject to change without notice.
 All square footages are approximate.
 Copyright © 2007 - Graham Hart Home Builder - All Rights Reserved.
 Revised 11/11/06 - WWW.GRAHAMHART.COM - 613112

